

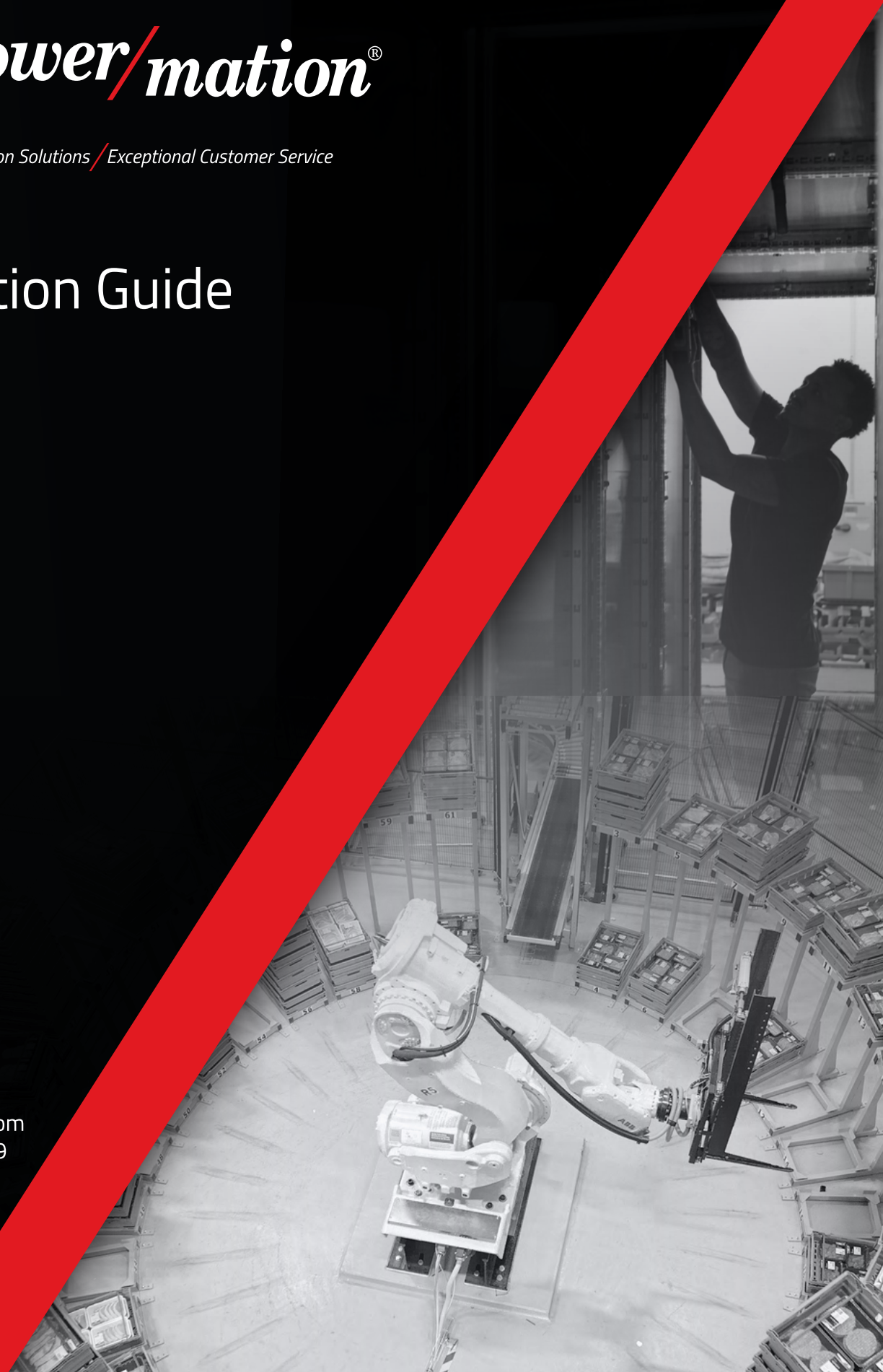


Power/mation[®]

Innovative Automation Solutions / Exceptional Customer Service

Automation Guide

www.powermation.com
800.843.9859





Power/mation®

Who We Are

Power/mation is a high-tech distributor of industrial automation products, headquartered in St. Paul, Minnesota, and has been servicing the Upper Midwest for over 60 years. We have stocking locations in Minnesota, Wisconsin, North Dakota, Illinois, and Iowa. With more than 100 suppliers on our line card, we have hand-selected some of the premier automation suppliers from around the world.

Our highly technical sales team has decades of experience in providing our customers with complete solutions. We pride ourselves on listening to our customers to solve their automation challenges with innovative and specialized solutions. We are your technical solutions partner.

Central to Power/mation's ethos is a commitment to putting our customers' needs first. Our team's entrepreneurial spirit is the foundation for finding ways to make our customers successful. We pride ourselves on being proactive problem solvers and innovative solution providers, standing by our commitment to serve as collaborative team members and partners to our customers and their engineering staff.

Solutions Group

The Power/mation Solutions Group is an extension of our promise to provide innovative automation solutions with exceptional customer service. Our team of engineers, project coordinators, assembly technicians, and strategic partners accelerate businesses with custom kits, enclosure modifications, safety fencing design, managed solutions, and more for a wide variety of applications.

Our History

Established in 1961 by founders Jim and Don Craighead, Power/mation boasts a rich history as a leading provider of automation solutions in the Midwest. Our company is dedicated to upholding our founders' entrepreneurial spirit by merging it with extensive product expertise and collaborating with the industry's premier brands to help you build what matters.

PREMIER PARTNERS



Industrial
Automation & Control
Premier Distributor



Fulfillment Center Overview & Solutions Group

Fulfillment Center & VLM Overview	4
In-House Solutions	6
Managed Solutions	8
Partnered Solutions	8

Automation Components

Sensing & Inspection	9
Panel Components	10
Enclosures	11
Logic Control & Visualization	12
Industrial Internet & Networking	13
Motion Control	14
Robotics	15
Connectors & Cabling	16
Machine Safety	17
Power Transmission	18
Pneumatics	19
Process Automation	20

Connect with Power/mation

Product Training	21
Power/mation Shop	21
Join Our Community	21
Associations	21
Supplier Index	25

OFFICE LOCATIONS



ST. PAUL, MINNESOTA



PEWAUKEE, WISCONSIN



DES MOINES, IOWA



BISMARCK, NORTH DAKOTA



APPLETON, WISCONSIN



GREEN BAY, WISCONSIN



ELK GROVE VILLAGE,



Power/mation[®]

Innovative Automation Solutions / Exceptional Customer Service

At Power/mation, we've improved our fulfillment center operations by integrating Modula's Vertical Lift Modules (VLMs), a type of automated storage and retrieval system (AS/RS). These systems have drastically increased our productivity and accuracy, allowing us to process up to 300 lines per hour. With advanced laser pointers and intuitive visual picking aids, our team quickly identifies and picks items, reducing errors and improving order fulfillment speed.



FULFILLMENT CENTERS

Integrating Modula's Vertical Lift Modules (VLMs)

The space-saving design of Modula's AS/RS has allowed us to optimize our fulfillment center layout, freeing up to 90% of previously used floor space. This not only improves efficiency but also creates a cleaner, more organized environment.

The fully enclosed system keeps our inventory secure and protected from dust and damage, with access restricted to authorized personnel. In addition to enhanced productivity, we've prioritized worker safety and ergonomics. The system delivers items directly to our employees, minimizing physical strain and boosting job satisfaction. Real-time monitoring and documentation of every picking operation provide us with full traceability and inventory visibility, ensuring we always have a clear picture of stock levels.

In addition to enhanced productivity, we've prioritized worker safety and ergonomics. The system delivers items directly to our employees, minimizing physical strain and boosting job satisfaction. Real-time monitoring and documentation of every picking operation provide us with full traceability and inventory visibility, ensuring we always have a clear picture of stock levels.



Current Fulfillment Center Locations

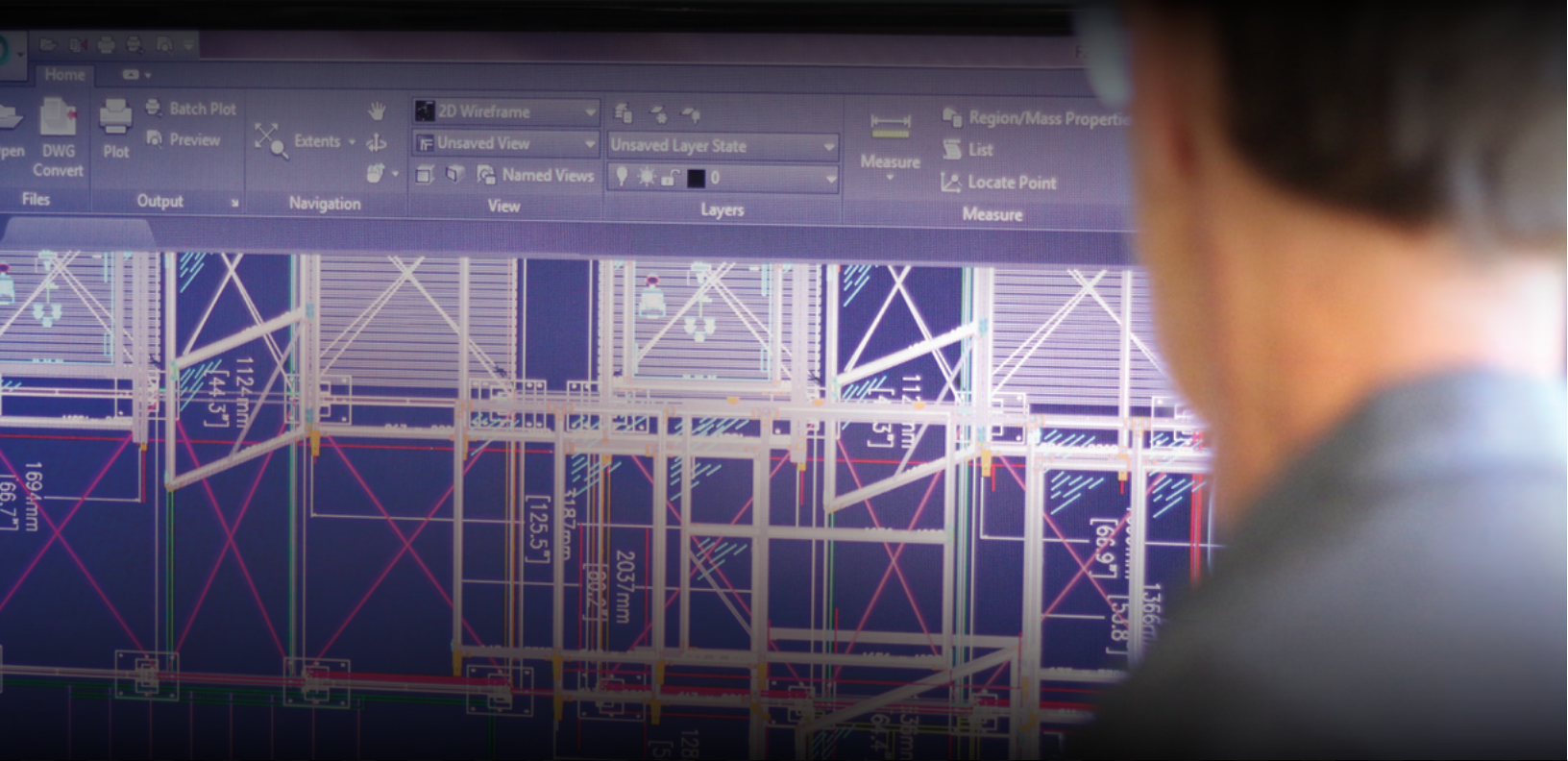
- ROSEVILLE, MN (60,000 SQ FT)
- PEWAUKEE, WI (13,000 SQ FT)
- GREEN BAY, WI (5,000 SQ FT)
- DES MOINES, IA (10,000 SQ FT)
- ELK GROVE VILLAGE, IL (12,000 SQ FT)
- BISMARCK, ND (9,000 SQ FT)

Integration With Our ERP

The seamless integration of Modula's Warehouse Management System (WMS) with our existing ERP and MRP platforms allows us to streamline our processes and maintain smooth coordination across the organization.

Proudly made in the USA, Modula's AS/RS has been a game-changer for Power/mation, delivering swift installation, reliable performance, and long-term efficiency for our fulfillment center operations.





Power/mation®

SOLUTIONS GROUP

Over the course of two decades, Power/mation forged a team to creatively overcome automation challenges. The result is a full-time staff of engineers, designers, and technicians to execute your custom applications with dedicated support along the way.

Combined with Power/mation's knowledgeable salesforce and longtime vendor partnerships, customers now gain access to an unparalleled suite of automation possibilities. This is the Power/mation Solutions Group.



IN-HOUSE SOLUTIONS

Enclosure Modifications & Assembly

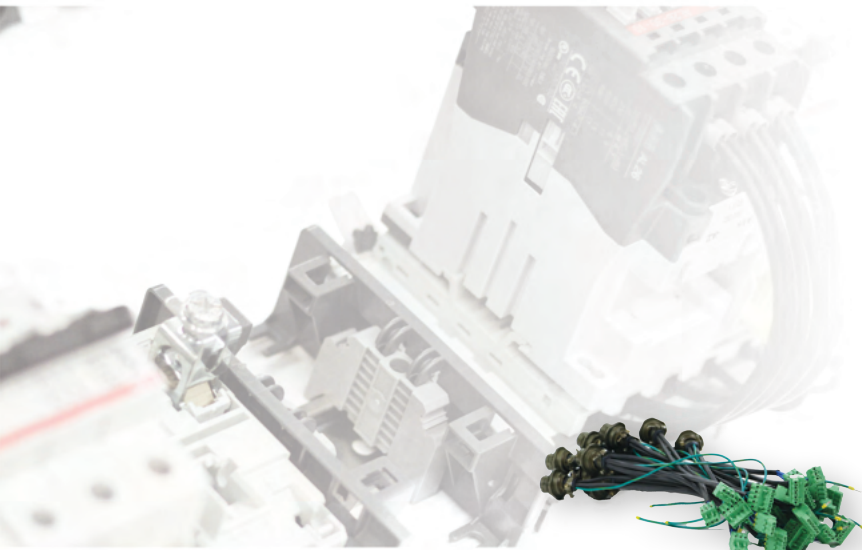
The Power/mation Solutions Group has engineers, drafters, and technicians on staff to customize enclosures to your exact specifications. A platinum partnership with Rittal Corporation ensures product stock for quick turnaround shipping and industry-best pricing. Whether it's a one-off custom job, or standardizing multiple enclosures, our CNC machine accurately cuts, drills and taps multiple materials including steel, stainless steel, aluminum, and non-metallics. Our enclosure modification shops are located at our offices in St. Paul, Minnesota and Pewaukee, Wisconsin.



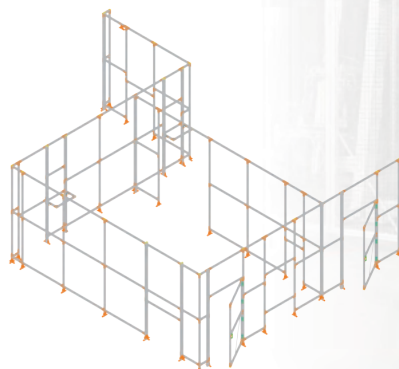
Custom Kits & Assemblies

The core of the Solutions Group's purpose is to ease our customers' experience in tackling their own applications. Each of the custom products we produce is assigned its own part number, which eases the ordering process and inventory management. Examples of the custom components in our portfolio:

- Cable Assemblies
- Din Rail Assemblies
- Bus Bar Assemblies
- Graphic Overlays
- Mounting Assemblies
- Built-to-Order Kits



Custom Safety Fencing



MANAGED SOLUTIONS

The Power/mation Solutions Group collaborates with our network of trusted integrators and specialty providers. We manage the project from concept to completion and deliver a total solution to you.

Outsourced Services

- UL 508 & 698
- CE Testing & Self-Certification
- Electrical & Mechanical Design Drafting
- Safety Risk Assessments
- Millwright Service
- Startup & Commissioning



Full Robotic Systems

- Application Design
- Complete Safety System Design
- Sizing Requirements
- Application Specifications
- Programming
- Simulation, Prototyping, & Evaluation
- Safety Risk Assessment

Software & Programming

- SCADA
- PLCs
- HMIs
- Drives
- Motion



PARTNERED SOLUTIONS

If your application needs something that Power/mation cannot provide, we will work to find the solution provider that can. We are dedicated to seeing our customers succeed.

To discuss your application, please call us at 800.843.9859.

SENSING & INSPECTION





Photoelectric

- Banner Engineering
- IDEC
- Datalogic

Proximity

- Turck

Laser Measurement

- Banner Engineering

Machine Vision

- Banner Engineering
- Datalogic
- Tamron
- Festo¹
- ABB
- Mech-Mind

Web Sensing

- Roll-2-Roll Technologies
- MAGPOWER

Temperature, Flow, & Measurement

- ABB
- Banner Engineering
- Turck
- Noshok
- Watlow
- Festo¹

RFID

- Turck
- RFID Inc.

Radar

- Banner Engineering

Ultrasonic

- Banner Engineering
- Turck

Limit Switches

- ABB
- Turck
- Euchner
- Festo¹

Rotary & Linear Position

- Turck
- Encoder Products Company
- Electro Cam
- Ametek
- Red Lion

Inclination

- Turck

Task Lighting

- Banner Engineering
- Phoenix Contact
- Horner Lighting

Indication & LED Lighting

- Banner Engineering
- Phoenix Contact
- Patlite
- Werma

¹Available only in IA, MN, ND, NE, SD & WI

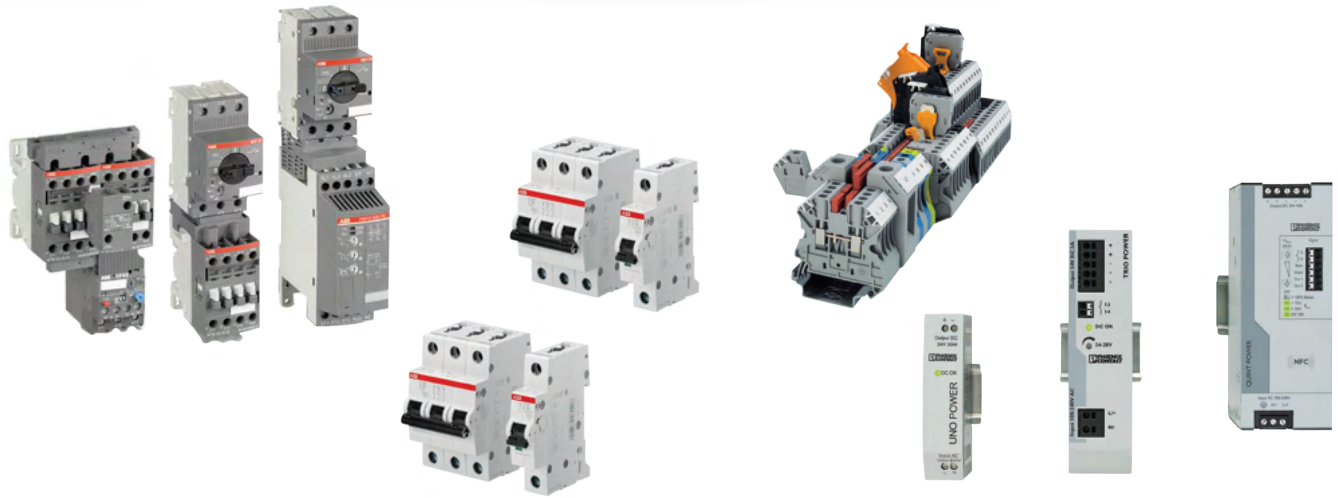
²Available only in MN, ND, SD & WI

³Available only in WI

⁴Available only in IA, IL & NE

⁵Available only in IL

PANEL COMPONENTS



Power Supplies & UPS

- Phoenix Contact
- IDEC
- PULS
- Sola/Hevi-Duty

Transformers

- Hammond Manufacturing
- Sola/Hevi-Duty

Starters & Contactors

- ABB
- Phoenix Contact
- Sprecher + Schuh

Circuit Breakers

- ABB
- Phoenix Contact

Panel Meters

- Red Lion

Protection, Filtering, & Conditioning

- Phoenix Contact
- Enerdoor
- TCI

Motor Control Centers

- ABB
- Emerson's PACSystems™

Timers & Counters

- IDEC
- Red Lion
- ABB
- Phoenix Contact
- Crouzet

Marking & Labeling

- Phoenix Contact
- Datalogic

Relays

- Phoenix Contact
- ABB
- IDEC
- Turck
- Eurotherm

Terminal Blocks

- Phoenix Contact

Soft Starters

- ABB
- Control Techniques

Fuses

- Mersen
(Ferraz Shawmut)

Enclosure Lighting

- Banner Engineering
- Rittal Corporation
- Haewa⁴
- Phoenix Contact

Temperature Controls

- Watlow
- ABB
- Red Lion

Din Rail & Wireduct

- Phoenix Contact
- ABB/Thomas & Betts

Hand-Held Pendants

- Euchner



¹Available only in IA, MN, ND, NE, SD & WI
²Available only in MN, ND, SD & WI
³Available only in WI
⁴Available only in IA, IL & NE
⁵Available only in IL

ENCLOSURES



Freestanding & Wall Mount

- Rittal Corporation
- Hammond Manufacturing
- Haewa⁴

Rack Mounted

- Rittal Corporation
- Hammond Manufacturing
- Haewa⁴

Hazardous Location

- Adalet

IT Enclosures

- Rittal Corporation

Stainless Steel

- Rittal Corporation
- Hammond Manufacturing
- Haewa⁴

Non-Metallic

- Hammond Manufacturing
- Stahlin
- Allied Moulded
- Vynckier

Custom

- Power/mation Solutions Group
- Rittal Corporation
- Hammond Manufacturing
- Haewa⁴

Climate Control

- Rittal Corporation
- Hammond Manufacturing
- Haewa⁴

Cable Entry Systems

- Phoenix Contact
- Roxtec
- ABB/Thomas & Betts
- Turck

Support Arm Systems

- Rittal Corporation

PANEL MODIFICATIONS & MORE

The St. Paul and Pewaukee Power/mation offices house our CNC cutting machines and custom assembly workspaces.

Additionally, the Power/mation Solutions Group has grown to include a unique team of dedicated engineers, customer service experts, and project management leaders.

To find out how the Power/mation Solutions Group can guide you through your next automation challenge, call us at 800.843.9859 or visit www.powermation.com.



Power/mation is one of the few Rittal Platinum Modification Partners. For our customers this means competitive pricing and guaranteed stock on a wider selection of enclosures.



LOGIC CONTROL & VISUALIZATION



Industrial
Automation & Control
Premier Distributor



Logic Control / PLC

- Emerson's PACSystems™
- Horner Automation
- Phoenix Contact
- ABB
- Festo¹
- IDEC
- Lenze
- Red Lion
- Turck

Industrial PC & Monitors

- Phoenix Contact
- Emerson's PACSystems™
- Lenze
- Maple Systems

HMI / Touch Screens

- Emerson's PACSystems™
- Horner Automation
- Red Lion
- Phoenix Contact
- ABB
- IDEC
- Maple Systems
- Turck

SCADA

- Emerson's PACSystems™
- ABB
- RRAMAC
- Kepware

I/O

- Phoenix Contact
- Turck
- Emerson's PACSystems™
- Lenze
- Festo¹



Power/mation is proud to be the exclusive Phoenix Contact Automation Elite Distribution Partner. Phoenix Contact also offers a limited lifetime warranty applying to a wide range of its products. Contact your sales representative for details.



INDUSTRIAL INTERNET & NETWORKING



Ethernet Switches

- Phoenix Contact
- Red Lion
- Emerson's PACSystems™
- Turck

Routers & Firewalls

- Phoenix Contact
- Red Lion

Media Converters

- Phoenix Contact
- Turck
- Red Lion

Copper & Fiber Media

- Turck
- Phoenix Contact

Protocol Converters

- Phoenix Contact
- Red Lion
- Secomea
- Turck

Industrial Wireless

- Phoenix Contact
- Banner Engineering
- Secomea

Cellular

- Verizon Partner
- Red Lion
- Phoenix Contact
- Banner Engineering
- Secomea
- Netcomm
- CradlePoint

Cloud Visualization & Digital Dashboards

- RRAMAC
- Banner Engineering
- Secomea
- Red Lion
- ABB

Cybersecurity Solutions

- Phoenix Contact
- Secomea
- Red Lion

Remote Access

- Phoenix Contact
- Secomea
- Red Lion

CONNECTING INDUSTRY TO THE INTERNET

Securely connect isolated islands of automation to each other, corporate systems and other service providers. Transform secure industrial data into information that empowers business leaders, operators and customers to improve all aspects of system performance.

With the right partners and technology, the real value of this information can be harnessed to improve quality, reduce downtime, manage assets and reduce costs.

Log on to www.powermation.com to review the entire suite of IIoT solution documentation.



The Industrial Internet of Things (IIoT) is about enhancing the end user's experience through ease-of-use tools and intuitive interfaces. For an OEM, it is essential to incorporate these new technologies and methodologies into its products and services so customers choose them for a solution.



¹Available only in IA, MN, ND, NE, SD & WI
²Available only in MN, ND, SD & WI
³Available only in WI
⁴Available only in IA, IL & NE
⁵Available only in IL

MOTION CONTROL



Industrial
Automation & Control
Premier Distributor



JOIN THE MOVEMENT

Motion control is an automation technology that has become the cornerstone of modern industrial machinery design. Power/mation has multiple motion experts on staff, putting a focus on working closely with customers to achieve their automation goals.

Two key improvements you will see when adding motion to your application are an enhanced level of productivity and an ease of use.

Head to powermation.com to get more details in our Motion Solutions brochure.



Motion Drives

- Lenze
- Control Techniques
- Oriental Motor
- Festo¹
- Yaskawa
- Emerson's PACSystems™
- Trio Motion

Integrated Motor & Control

- Exlar
- IAI
- Festo¹
- Dunkermotoren

Couplings

- GAM
- Zero-Max
- NBK
- KTR

Actuators

- Exlar
- Tolomatic²
- Bishop-Wisecarver
- IAI
- Macron Dynamics
- Oriental Motor
- Festo¹
- THK
- Rollon⁴

Motion Controllers

- Lenze
- Trio Motion
- Festo¹
- Yaskawa
- Control Techniques

Bearings

- Bishop-Wisecarver
- igus
- THK

Servo Motors

- Lenze
- Control Techniques
- Exlar
- Oriental Motor
- Festo¹
- Yaskawa
- Emerson's PACSystems™
- ABB

Stepper Motors

- Oriental Motor
- Festo¹

Precision Gearboxes

- Apex Dynamics
- GAM
- Nexen

Rail

- THK
- Bishop-Wisecarver
- Rollon⁵

ROBOTICS



Robots

- ABB
- Doosan Robotics
- IAI
- Macron Dynamics
- Festo¹
- Bishop Wisecarver

Cable Management

- Robot System Products
- igus

End of Arm Tooling

- Schmalz
- Festo¹
- Robot System Products
- ABB
- Effecto Group
- IAI
- Oriental Motor

External Axis

- Macron Dynamics
- Tolomatic²
- Bishop Wisecarver
- Festo¹
- IAI

Vision

- ABB
- Doosan Robotics
- Datalogic
- Banner Engineering
- Mech-Mind

Storage & Feed Systems

- Flexibowl
- Easy Robotics

GET A GRIP!

Power/mation offers all complementary components such as grippers, feed systems, and vision equipment to tailor a solution to your application.

Power/mation specialists will work with you to select the best components from our suppliers for your new or existing application. Power/mation Solutions Group will take it from there to integrate your solution into your facility.

Explore the Power/mation Robotics Solutions application guide at our website for more details.



¹Available only in IA, MN, ND, NE, SD & WI

²Available only in MN, ND, SD & WI

³Available only in WI

⁴Available only in IA, IL & NE

⁵Available only in IL

CONNECTORS & CABLING



Cordsets

- Turck
- Phoenix Contact
- Banner Engineering

Bulk Cable

- Turck
- Phoenix Contact
- SAB

Fiber Optic

- Phoenix Contact
- Banner Engineering

Connectors

- Turck
- Phoenix Contact
- ABB/Thomas & Betts
- Meltric

Cable Management

- ABB
- igus
- Phoenix Contact
- ABB/Thomas & Betts

Multi-Ports

- Phoenix Contact
- Turck

Cable Glands

- Phoenix Contact
- Rittal Corporation
- Roxtec
- ABB/Thomas & Betts

VFD & Motor Cable

- Turck
- Phoenix Contact
- SAB

¹Available only in IA, MN, ND, NE, SD & WI

²Available only in MN, ND, SD & WI

³Available only in WI

⁴Available only in IA, IL & NE

⁵Available only in IL

MACHINE SAFETY



Presence Sensing & Light Curtains

- Banner Engineering
- Euchner
- Inxpect
- Recora
- Pilz
- IDEC
- ABB

Safety Relays

- Phoenix Contact
- Pilz
- Banner Engineering
- Euchner
- ABB

Safety Switches

- Fortress Interlocks
- Euchner
- Banner Engineering
- Pilz
- IDEC
- Phoenix Contact

Machine Guarding

- Power/mation Solutions Group
- Frame-World
- Safety Systems Products (SSP)

Programmable Safety Controllers

- Banner Engineering
- Pilz
- Phoenix Contact
- ABB
- Euchner

Specialty Automation Safety

- ABB
- Festo¹
- Nexen - NexSafe
- Macurco Gas Detection

SAFETY SOLVED

Power/mation offers a complete suite of safety components including custom hard guard fencing designed and manufactured in our Pewaukee, Wisconsin office.

Power/mation fencing systems are modern, attractive, modular and, easy to assemble. Our fencing design team will create a custom cell for your application, revising it until you are completely satisfied.

Check out the Safety Solutions documentation and custom fencing design worksheet available at www.powermation.com. Contact your sales representative to learn more.

Custom Safety Fencing by



POWER TRANSMISSION



BALDOR • RELIANCE®



Lenze



nexen.



Motors

- ABB
- Baldor - Reliance
- Lenze
- Leeson Electric
- Brook Crompton
- Nord Drivesystems
- U.S. Motors (Nidec)

Gear Boxes

- Lenze
- Nord Drivesystems
- Grove Gear
- Hub City

Ball Screw

- THK

VFDs

- ABB
- Control Techniques
- KB Electronics
- Lenze
- Emerson's PACSystems™
- Nord Drivesystems

Web Tension

- ABB
- MAGPOWR
- Cleveland Motion Controls
- Contrex
- Nexen
- Roll-2-Roll Technologies

Couplings

- GAM
- THK
- NBK
- Zero-Max

Gear Motors

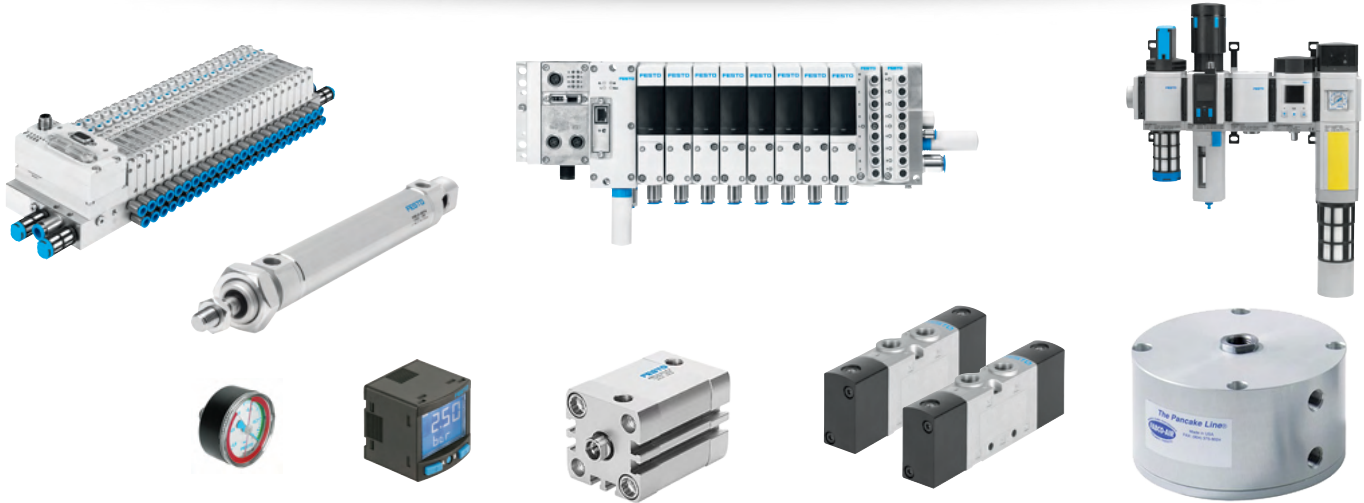
- Lenze
- Nord Drivesystems
- Baldor - Reliance
- Leeson Electric

Brakes

- Nexen
- Dings

Power/mation offers assistance in selecting the necessary drives and accessories for your new power transmission application. Additionally, Power/mation provides application support in maintaining, repairing, and upgrading legacy systems. Talk to your sales representative to explore your options.

PNEUMATICS



Compressed Air Preparation

- Festo¹
- Fabco-Air

Valves

- Festo¹
- Fabco-Air

Vacuum Technology

- Festo¹
- Schmalz

Pneumatic Caliper Brakes

- Nexen

Air Supply Components

- Festo¹

Valve Manifolds

- Festo¹

Pneumatic Actuators

- Festo¹
- Fabco-Air

Pneumatic Clutches

- Nexen

Handling Systems

- Festo¹

Servo-Pneumatic Control Components

- Festo¹

Grippers

- Festo¹
- Fabco-Air
- Schmalz
- Magswitch
- Robot System Products
- Zaytran (Festo)

ON THE AIR

Power/mation and Festo are working together to help our customers make their products faster, smarter, and more precise.

Festo is an industry leader of research and development in current and emerging automation technologies. From full pneumatic architecture to innovative electric motion control, Festo is ready to creatively approach automation challenges.

Go to www.powermation.com to download the Pneumatic Solutions document to learn how Festo adds to Power/mation's complete automation offering.



PROCESS AUTOMATION



UPTIME - 24/7, 365

When critical components of businesses or municipalities are automated, it's important to choose the right technologies with a history of success.

Power/mation provides the expertise and partnerships with market-leading suppliers. Monitor and control your application throughout to achieve your production goals with no unplanned downtime.

Read more in the Process Automation Solutions guide at www.powermation.com.



Measurement Sensors

- Turck
- Banner Engineering
- NOSHOK
- Festo¹
- Macurco Gas Detection

Connectivity

- Turck
- Phoenix Contact
- Banner Engineering

Controllers

- Emerson's PACSystems™
- Turck
- Phoenix Contact

Valve Actuators

- Festo¹
- Exlar

Visualization

- Emerson's PACSystems™
- Phoenix Contact
- RRAMAC

Data Management

- Emerson's PACSystems™
- Datalogic
- Turck Vilant Systems

Power Reliability

- Phoenix Contact
- Enerdoor
- Emerson's PACSystems™

Temperature Control

- Red Lion
- Watlow
- Turck
- Chromalox

Valving

- NOSHOK
- Turck
- Festo¹

Hazardous Location

- Adalet
- NOSHOK
- Turck
- Phoenix Contact
- Festo¹

¹Available only in IA, MN, ND, NE, SD & WI
²Available only in MN, ND, SD & WI
³Available only in WI
⁴Available only in IA, IL & NE
⁵Available only in IL

POWER/MATION SHOP



Visit shop.powermation.com and register with your company information to access real time order status, inventory, and more.



For registration or other inquiries regarding Power/mation SHOP contact the development team at shop@powermation.com.

PRODUCT TRAINING & WEBINARS



Power/mation hosts training sessions ranging from brief lunch and learns to multiple day programming courses. Typically led by Power/mation Business Development Managers, the goal is for our customers to gain a high level of understanding and insight into modern automation.

Visit www.powermation.com for a complete listing.

JOIN OUR COMMUNITY



Follow us on LinkedIn, Facebook, X, and YouTube to be the first to hear about exciting industry news and Power/mation events!



YOUTH IN STEM



Power/mation is proud to sponsor a variety of FIRST Robotics teams from our territories. Our experts provide mentorship and help craft the future of this very industry, starting with the best and brightest minds of today's youth.



ASSOCIATIONS



Power/mation regularly contributes to the associations that guide the future of the automation industry. To remain at the forefront of industry technology trends, our company is an official member of multiple distributor organizations.

A

ABB
 ABB/Baldor-Reliance
 ABB/Thomas & Betts
 ABB/GE Controls
 ABB Drives
 ABB Motion
 ABB Robotics
 Adalet
 Allied Moulded
 Ametek
 Apex Dynamics

B

Banner Engineering
 Bihl+Wiedemann
 Bishop-Wisecarver
 Bodine Electric
 Brad Harrison
 Brook Crompton

C

Chromalox
 Cleveland Motion Controls (CMC)
 Contrex
 Control Techniques (Nidec)
 Control Technology Corporation
 Cruzet

D

Datalogic
 Dings Dynamics
 Doosan Robotics
 Dunkermotoren
 Durant

E

Easy Robotics
 Effecto Group
 Electro Cam
 ElectroCraft
 Emerson's PACSystems™
 Encoder Products Company
 Enerdoor
 EPLAN
 Euchner
 Eurotherm
 Exlar

F

Fabco-Air
 Festo¹
 Flexibowl
 Fortress
 Frame-World

G

GAM
 Gardasoft
 Grove Gear

H

Hammond Manufacturing
 Horner Automation
 Horner Lighting
 Hub City

I

IAI
 IDEC
 igus
 Industrial Enclosures Corporation
 Inertia Dynamics
 Intercon 1
 Inxpect

J

Joyce/Dayton

K

KB Electronics (Nidec)
 Kepware
 Killark
 Kraus and Naimer

L

Leeson Electric
 Lenze

M

Macron Dynamics
 Macurco Gas Detection
 MAGPOWR
 Magswitch
 Maple Systems
 Mech-Mind
 Meltric
 Mersen (Ferraz Shawmut)

N

NBK
 Nexen
 Nord Drivesystems
 Norstat
 NOSHOK

O

Oriental Motor

P

Patlite
 Phoenix Contact
 Phoenix Digital
 Pilz
 Power/mation Solutions Group
 Pro-face
 PULS

R

Recora
 Red Lion
 RFID Inc.
 Rittal Corporation
 Robot System Products (RSP)
 Roll-2-Roll Technologies
 Rollon⁵
 Roxtec
 RRAMAC

S

SAB
 Safety Systems Products (SSP)
 Schlegel
 Schmalz
 Secomea
 Servo Solutions, Inc.
 Sola/Hevi-Duty
 Sprecher + Schuh
 Stahlin

T

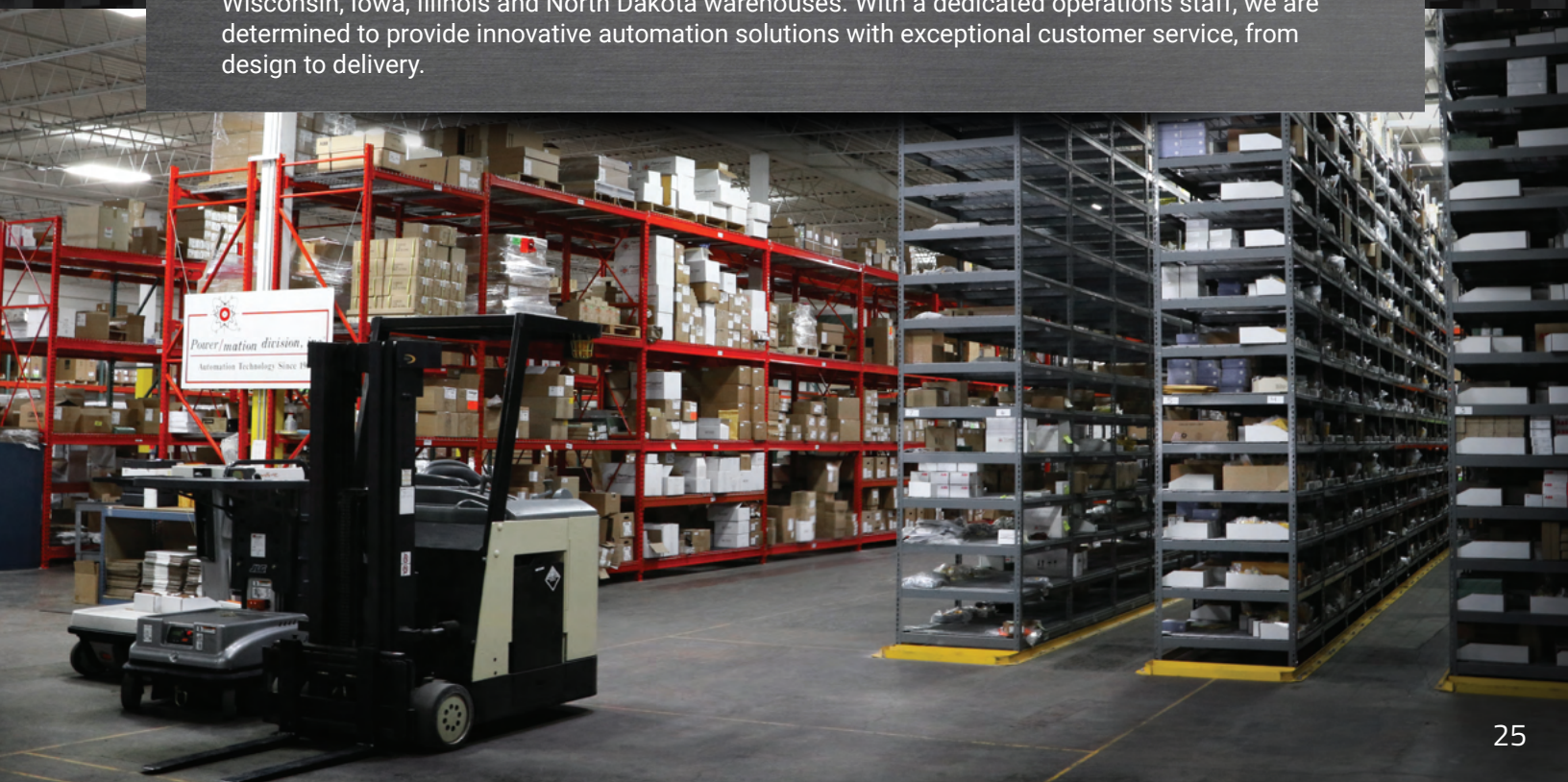
Tamron
 TCI
 TE Connectivity
 THK
 Tolomatic²
 Trio Motion
 Turck

UVWXYZ

U.S. Motors (Nidec)
 Verizon Partner
 Vynckier
 Watlow
 Werma
 Winsmith
 Yaskawa
 Zaytran (Festo)
 Zero-Max

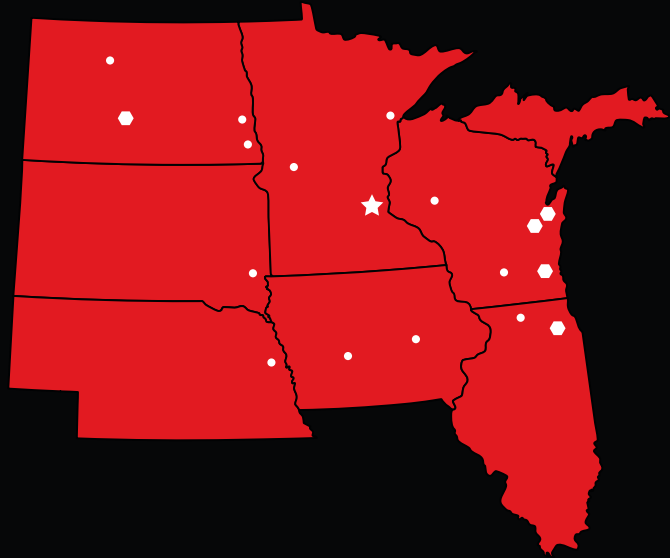
¹Available only in IA, MN, ND, NE, SD & WI | ²Available only in MN, ND, SD & WI | ³Available only in WI | ⁴Available only in IA, IL, & NE | ⁵Available only in IL

Power/mation is committed to serving our customers with in-stock products at our Minnesota, Wisconsin, Iowa, Illinois and North Dakota warehouses. With a dedicated operations staff, we are determined to provide innovative automation solutions with exceptional customer service, from design to delivery.



Corporate Headquarters

St Paul, MN
1310 Energy Ln
St Paul, MN 55108
(800) 843-9859
(651) 605-3300
(651) 605-4400 Fax



Office Locations

Pewaukee, WI
N28 W23566 Creative Way
Pewaukee, WI 53072
(800) 242-2060
(262) 408-6100
(262) 523-0611 Fax

Appleton, WI
5485 W Grande Market Dr
Suite A
Appleton, WI 54913
(800) 242-2060
(920) 969-9917

Green Bay, WI
2221 Starr Ct
Green Bay, WI 54303
(800) 924-6260
(920) 497-6354
(262) 523-0611 Fax

Elk Grove Village, IL
1960 E Devon Ave
Elk Grove Village, IL 60007
(800) 242-2060
(630) 475-4240
(262) 523-0611 Fax

Des Moines, IA
4407 121st Street
Urbandale, IA 50323
(800) 843-9859
(515) 303-0064
(651) 605-4400 Fax

Bismarck, ND
1307 Grumman Lane
Bismarck, ND 58504
(833) 200-5086
(651) 605-4400 Fax

Sales Territories

Minnesota

Twin Cities Metro
(800) 843-9859 Customer Service
(651) 605-3300 Sales

Alexandria
(800) 843-9859 Customer Service

Duluth
(800) 843-9859 Customer Service
(218) 628-6063 Sales

Mankato
(800) 843-9859 Customer Service
(612) 709-5208 Sales

Wisconsin

Milwaukee
(800) 242-2060 Customer Service
(262) 408-6100 Fax

Madison
(800) 242-2060 Customer Service
(262) 523-0611 Fax

Eau Claire
(800) 843-9859 Customer Service

North Dakota

Fargo
(800) 843-9859 Customer Service
(651) 605-4400 Fax

Minot
(800) 843-9859 Customer Service
(651) 605-4400 Fax

Wahpeton
(800) 843-9859 Customer Service
(651) 605-4400 Fax

South Dakota

Sioux Falls
(800) 843-9859 Customer Service
(605) 335-3046 Sales

Illinois

Chicago
(800) 242-2060 Customer Service

Rockford
(800) 242-2060 Customer Service
(651) 605-4400 Fax

Iowa

Des Moines
(800) 322-4589 Customer Service
(651) 605-4400 Fax

Cedar Rapids
(800) 322-4589 Customer Service
(319) 395-0929 Fax

Nebraska

Omaha
(800) 428-9036 Customer Service
(402) 445-8728 Fax



Power/mation[®]

800.843.9859
www.powermation.com

