

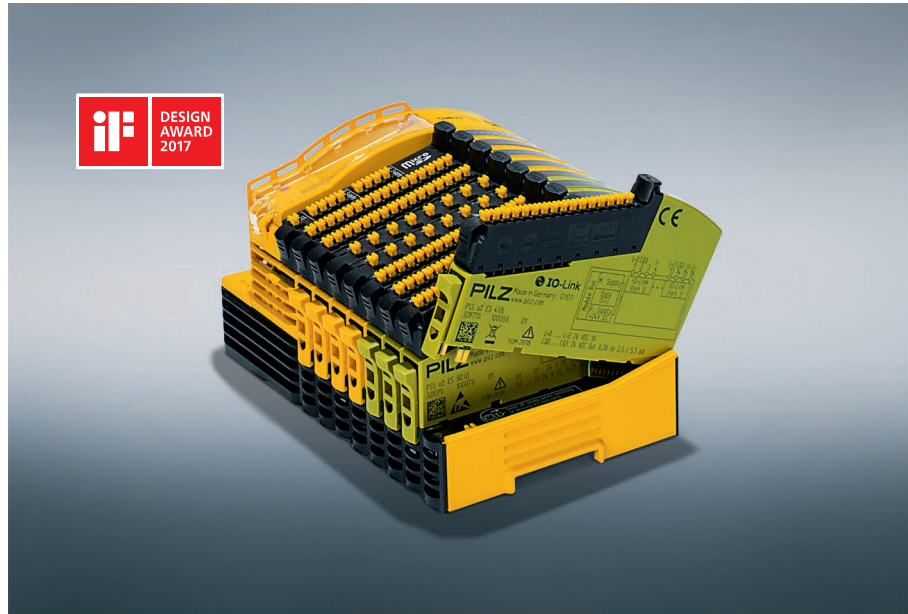
► Automated parametrization and extended diagnostics thanks to IO-Link master

NEW

A module with IO-Link master is now available for the remote I/O system PSSuniversal 2 which can be integrated into PROFINET and EtherNet/IP networks using appropriate head modules. The module provides four IO-Link ports to which you can connect IO-Link devices (sensors or actuators). This means that the remote I/O system PSSuniversal 2 can now also communicate with sensors and actuators via the globally standardized IO-Link interface (IEC 61131-9). The configuration of the IO-Link devices can be stored in the IO-Link master and simply transferred when exchanging during service. This saves time and reduces errors and plant downtimes!



The PSSuniversal 2 has won the iF DESIGN AWARD 2017, so joining the prizewinners of this internationally renowned design label.



Your benefits at a glance

- Configuration stored in the master can be easily written to the new device during replacement
- Enhanced safety thanks to error-free parameter setting of sensors
- Automated parametrization of the sensors in the event of fault or service
- Extended diagnostics through communication with the IO-Link devices also enables open circuit detection
- IO-Link module can be exchanged during operation
- Operators do not have to deal with the parametrization of sensors
- Central documentation of the parameter sets
- Simple configuration of the module using PASconfig software



Remote I/O system PSSuniversal 2 – IO Link master



PSS u2 ES 4IOL



PSS u2 P0 F/S PN

Technical features

- ▶ 4 IO-Link ports for connecting IO-Link devices (sensors or actuators)
- ▶ Hot swap – module exchange possible during operation
- ▶ Graphics configuration tool PASconfig with export function for direct import into RSLogix
- ▶ GSDML file for configuration in a PROFINET-capable controller
- ▶ *.ilx file for configuration in an EtherNet/IP-capable controller
- ▶ Simple IO mapping
- ▶ Storage of the device configuration in the master
- ▶ Module consists of: electronic module, terminal block with cage clamp terminals and backplane

Order number

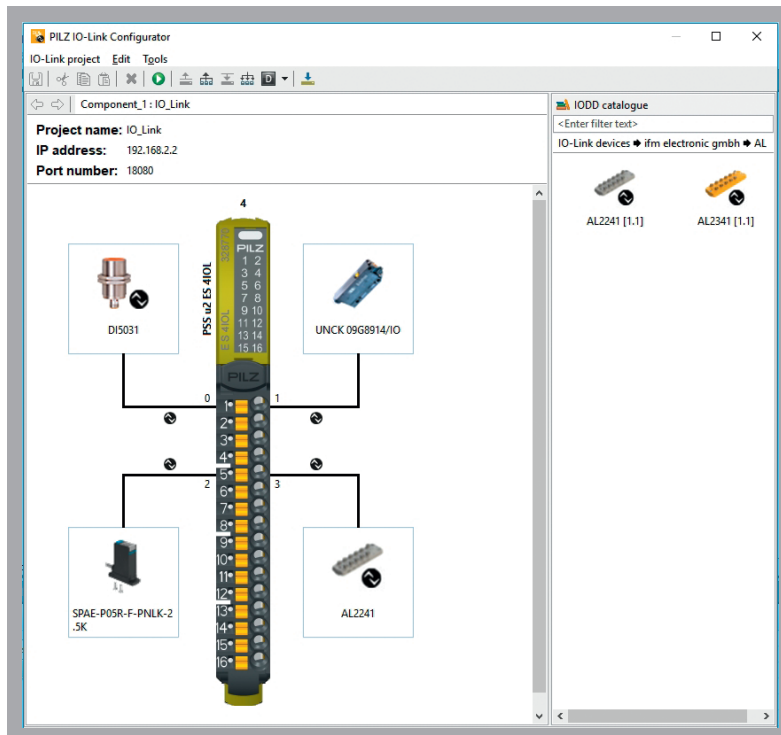
- ▶ PSS u2 ES 4IOL 328 770
- ▶ Standard electronic module for connection of IO-Link devices

Head modules:

- ▶ PSS u2 P0 F/S EIP 328 071
- ▶ Head module EtherNet/IP Client/CIP Safety Device
- ▶ PSS u2 P0 F/S PN 328 061
- ▶ Head module PROFINET Client/PROFIsafe Device

Further modules and accessories can be found on our website under:

Webcode:
web180627



Configuration of sensors with the IO-Link master module in the configuration tool PASconfig.

Order the IO-Link master module in the E-Shop here:

Webcode:
web180630

Online information at www.pilz.us